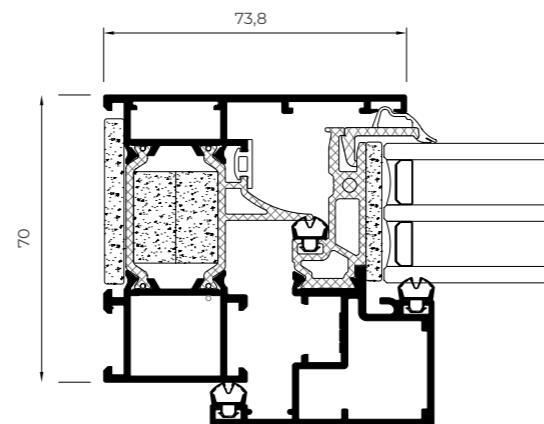


COR 70

Evolution

Hinged system with groove 16 destined for the industrial production of windows, doors and balconies. In order to reduce the manufacturing period, this new series offers the possibility of using pre-assembled gaskets, assembling cleats and a central floating mullion with a two piece hidden sash, which allows the glazing of double-sash windows on site. COR 70 Evolution is presented in a version of hidden or half-hidden sash with monoblock frames, in straight cut or perimetral, aiming at facilitating the on-site installation.

16 Grooven
Thermally broken



FEATURES

Transmittance		$U_w \geq 0,9$ (W/m ² K)
Acoustic insulation		Rw up to 43 dB
Air permeability		Class 4
Water tightness		Class E1200
Wind resistance		Class C5

Reference test 1,23 x 1,48 m / 2 sashes

POSSIBILITIES



OPENING POSSIBILITIES



Inward Opening
Side hung
Tilt & turn
Tilt only

Sightlines

Frame 70 - 232 mm
Sash 72,5 - 88,5 mm

Glazing

Hidden sash 36 mm
Half hidden sash 63 mm

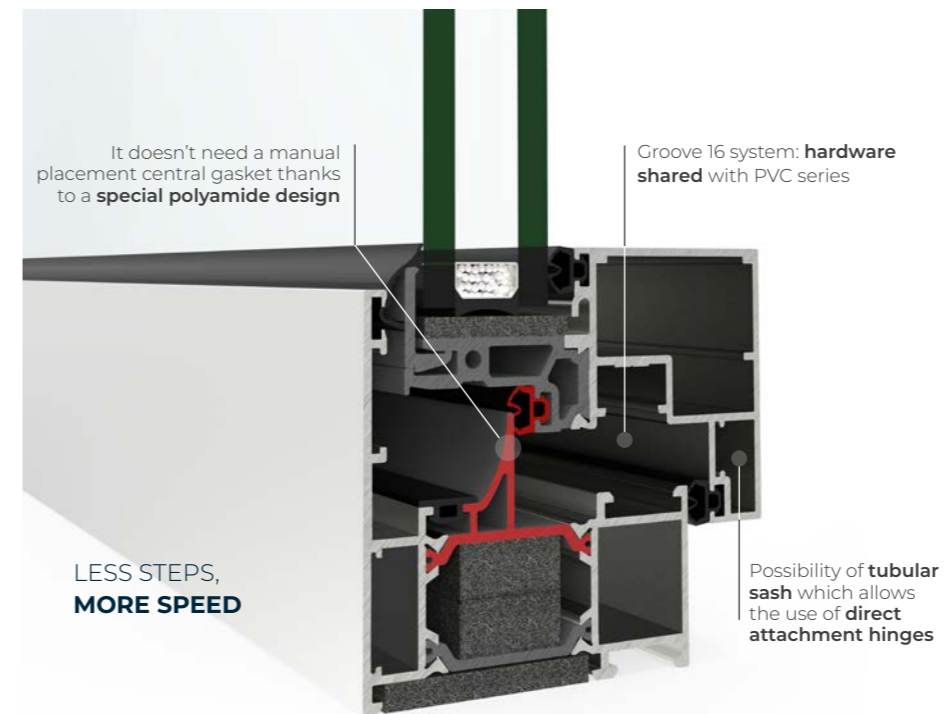
Maximum Sash Dimensions

Width (L) 1500 mm
Height (H) 2600 mm

Maximum Sash Weight

150 kg

Consult maximum weight and dimensions according to typologies



MANUAL GLAZING GASKETS AVAILABLE



Glazing gasket
6,5 mm



Glazing gasket
8,5 mm



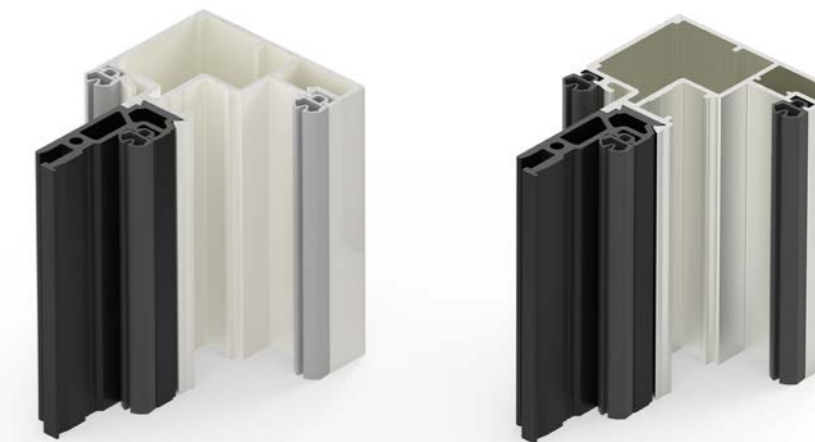
Glazing gasket
2,5 mm



Glazing gasket
4,5 mm

POSSIBILITY OF PROVIDING PREASSEMBLED GASKETS

Gaskets available in black and grey



COR 70

Evolution



aesthetic possibilities



Hidden sash



Half - Hidden sash



Perimetral
Monoblock frame



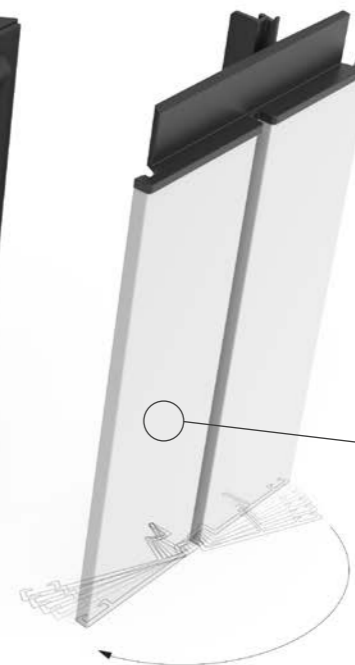
Straight cut
Monoblock frame



Covers available in **black** or **white**



ASSEMBLING CLEATS
In order to speed the assembly up



NEW FLOATING MULLION
Floating mullion profile in two parts in order to **facilitate the on-site glazing** without the need to take the profile and hardware apart

COR 70

Evolution

